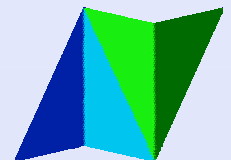
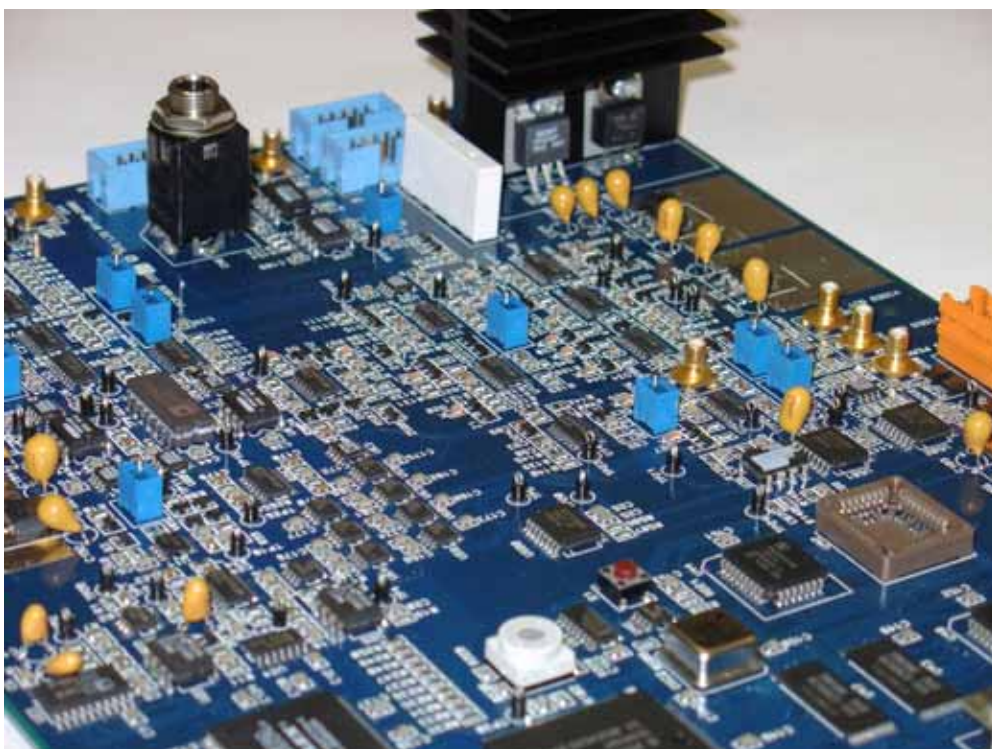


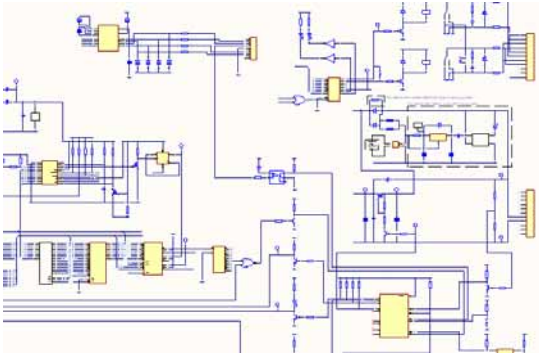


## PCB Assembly

Arrowvale offer a total solution for all PCB assembly requirements utilising the latest in manufacturing and test technologies to reduce production costs, maximizing production throughput and maintaining quality standards.

- Complex and high density layouts
- Modern manufacturing facilities
- Mixed technology - surface mount & through-hole assembly
- Single & multi-layer PCB's
- Automatic vision aligned surface mount placement
- CAD import SMD placement data
- Bare board testing available
- No-clean low residue solder
- In-house conformal coating
- Full in-process inspection
- RoHS compliant PCB assembly (lead free)

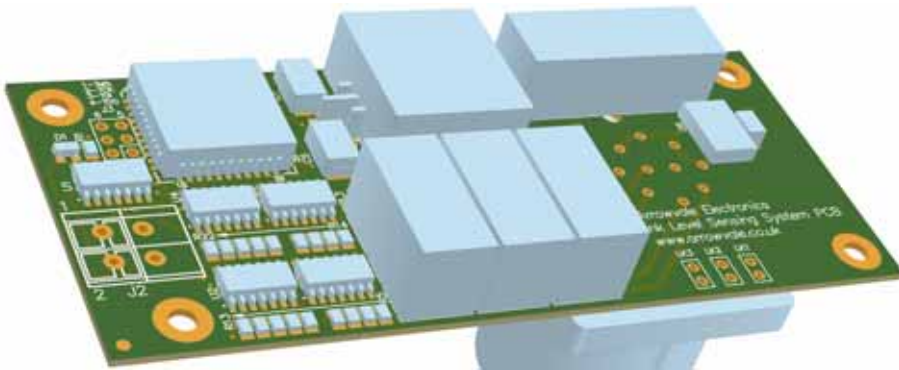
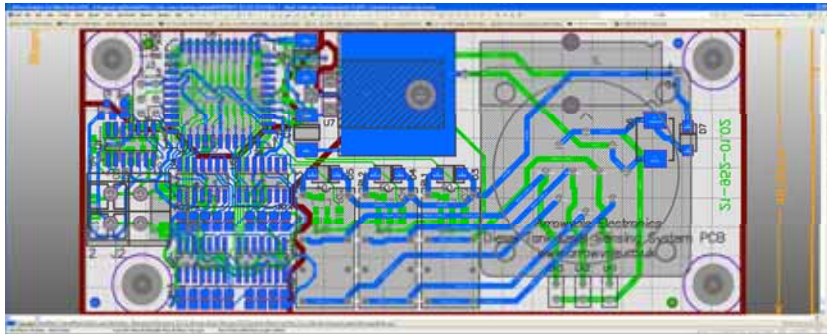




## Value Added Services

- PCB design & layout
- Functional testing
- Design & build of custom test equipment
- On site environmental chamber available for accelerated life testing

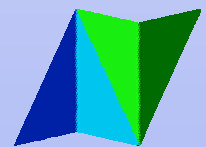
Using the latest software and technologies allows us to provide you with an accurate, cost effective design that's right first time.



## Selective Conformal Coating

Where a PCB assembly is used in a potentially hostile environment conformal coating may be applied to protect the unit. Selective conformal coating puts the protection exactly where it is required, without the need or expense of masking. Conformal coating improves product and dielectric reliability in hostile environments giving protection against moisture, chemicals, salt, air borne contaminants, humidity, dust and hostile environments.

Arrowvale Electronics have always been proactive with regards to environmental issues and can offer design and manufacturing services that meet RoHS compliance, including working with customers to convert existing products to RoHS compliance.



Arrowvale Electronics  
 Arrow Business Park  
 Shawbank Road  
 Lakeside, Redditch  
 Worcestershire  
 B98 8YN  
 United Kingdom  
 T: +44 (0)1527 514151

E: [sales@arrowvale.co.uk](mailto:sales@arrowvale.co.uk)  
 W: [www.arrowvale.co.uk](http://www.arrowvale.co.uk)